

# Barcode Your Tools

*Reduce costly setup time up to 50% !*



## PC-DNC Plus Tooling Control System

Preset and barcode *all* your tools.  
Tool length and diameter information is kept in a simple database.

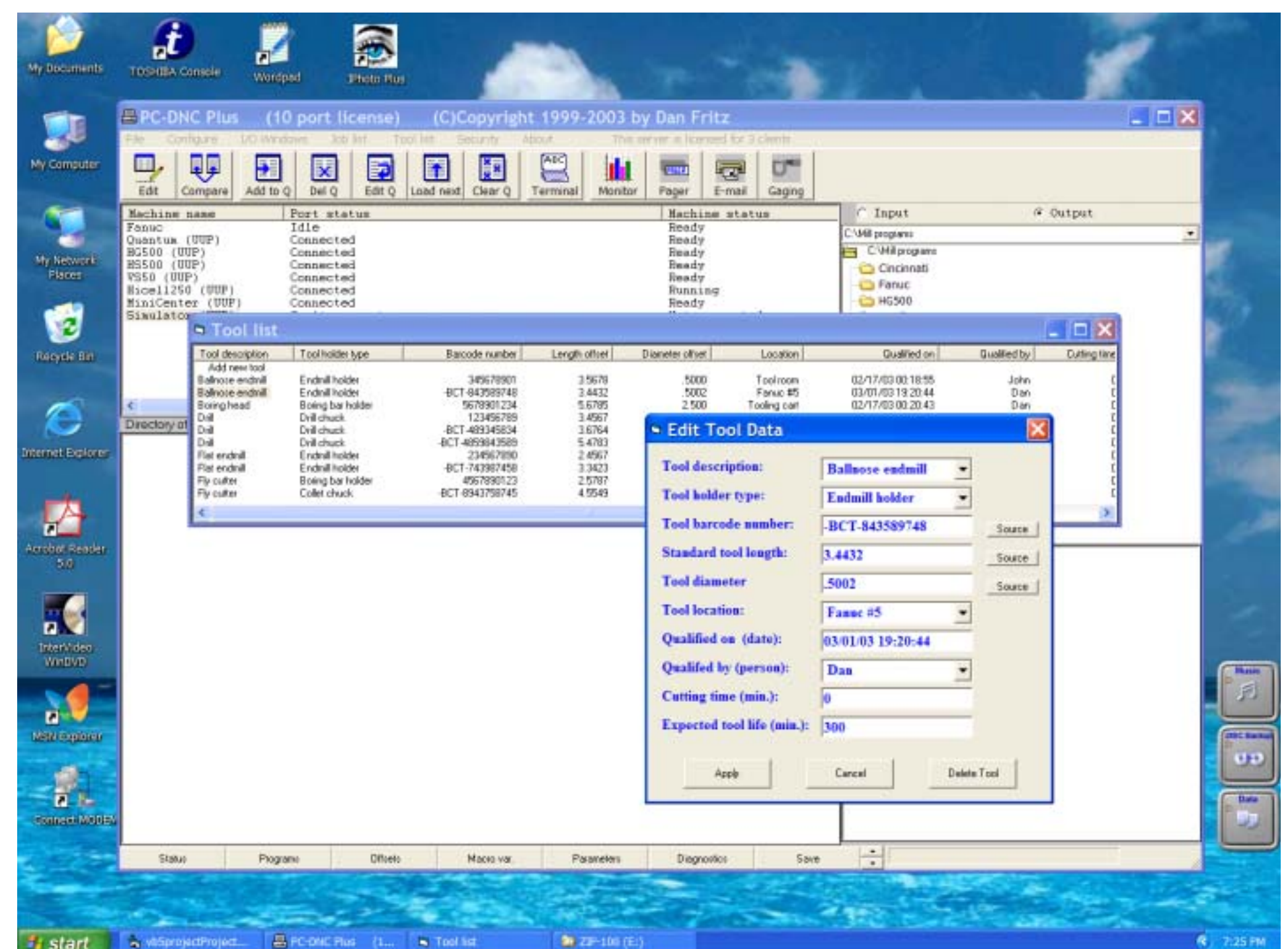
For more technical information, go to:  
[www.sub-soft.com/tooling.htm](http://www.sub-soft.com/tooling.htm)

At the machine, just scan a tool's barcode tag to automatically load tool offset data into your CNC control.

Avoid manual data entry. Setups are fast, easy, and *exact* !

PC-DNC Plus automatically tracks the location of each tool and monitors how long it's been in use.

PC-DNC Plus can automatically send pages or e-mails when any tool reaches its expected life span.



- ◆ Preset and barcode tool holders for *lathes or mills*
- ◆ Automatically load the correct offsets into your CNC's
- ◆ Monitor tool life using macros in your CNCs (macro B)
- ◆ Automatically send pages or e-mails *before* tools wear out
- ◆ Works with Haas, Yasnac, Fanuc, and other popular CNCs

## Suburban Machinery Software, Inc.

Visit us at: [www.sub-soft.com](http://www.sub-soft.com)

37777 Harlow Drive, Willoughby, OH 44094

Phone: (440) 951-8974 Fax: (216) 420-9208 E-mail: [subsoft@buckeyeweb.com](mailto:subsoft@buckeyeweb.com)