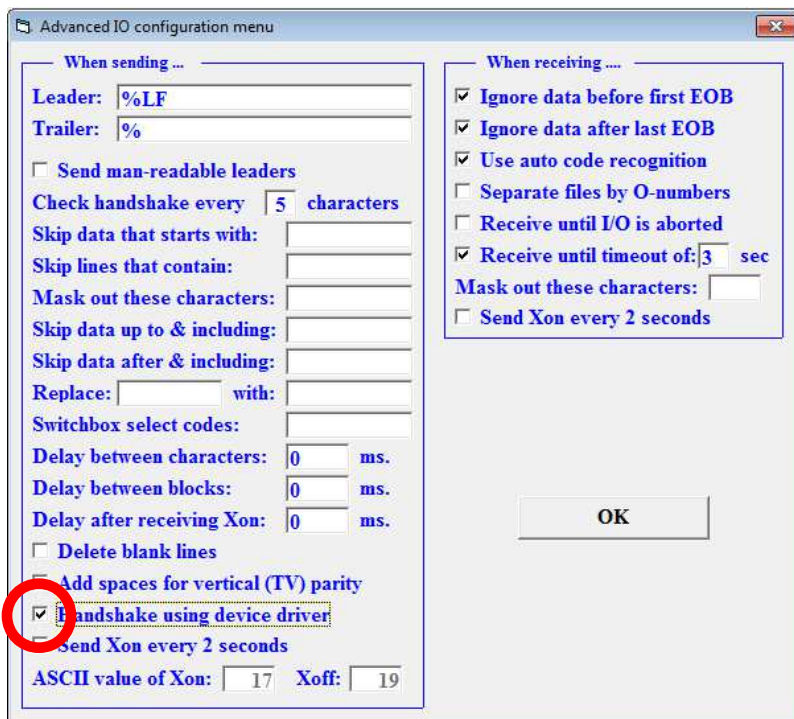


PC-DNC FAQs

Making our customers' lives easier.

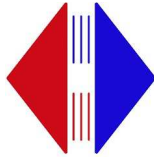
Drip Feed Settings in PC DNC Editor

- Go to I/O Menu
- Configure I/O Device
- Select Machine
- Click on Advanced
- Check Handshake using device driver
- Click OK



If you are using a NATIVE COM Port (DB9 port on back of computer) do the following (not applicable with BTR):

- In Windows Device Manager
- Open Ports (COM and LPT)
- Right Click on native Com Port (COM 1)
- Click Properties
- Port Settings
- Click Advanced button



PC-DNC FAQs

Making our customers' lives easier.

Check "Use Fifo buffers"

Make sure Receive is all the way to right (High)

Make sure Transmit is set all the way to left (low)

(If you are using a USB adapter, please call. The settings here will be different.)

If still not successful, try the following settings.

Advanced IO configuration menu

When sending ...

Leader: %LF

Trailer: %

Send man-readable leaders

Check handshake every 5 characters

Skip data that starts with:

Skip lines that contain:

Mask out these characters:

Skip data up to & including:

Skip data after & including:

Replace: with:

Switchbox select codes:

Delay between characters: 0 ms.

Delay between blocks: 0 ms.

Delay after receiving Xon: 0 ms.

Delete blank lines

Add spaces for vertical (TV) parity

Handshake using device driver

Send Xon every 2 seconds

ASCII value of Xon: 17 Xoff: 19

When receiving ...

Ignore data before first EOB

Ignore data after last EOB

1. Increment "Check handshake every X Characters" down by 1 until you reach 1 (i.e. try 4, then 3, then 2, then 1)

2. Increment up by 1 and retest. (i.e. try 1, then 2, then 3)

OK